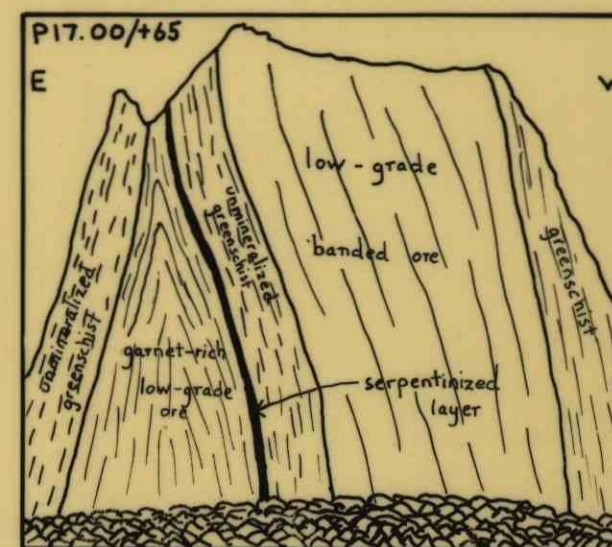
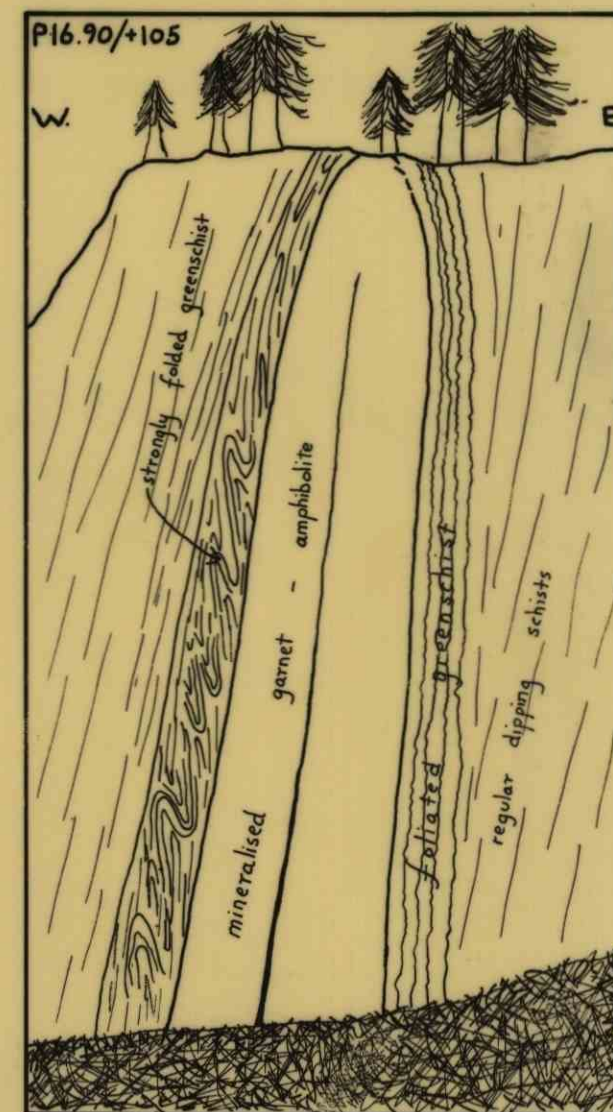
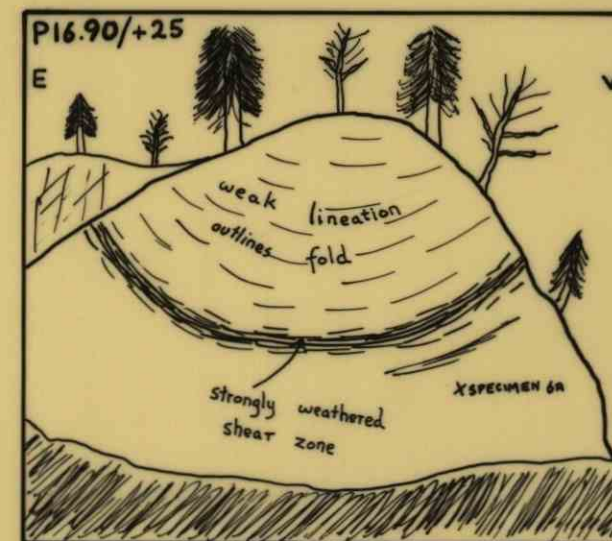


# STEINÅGA (Beiardalen) Geologisk kart.

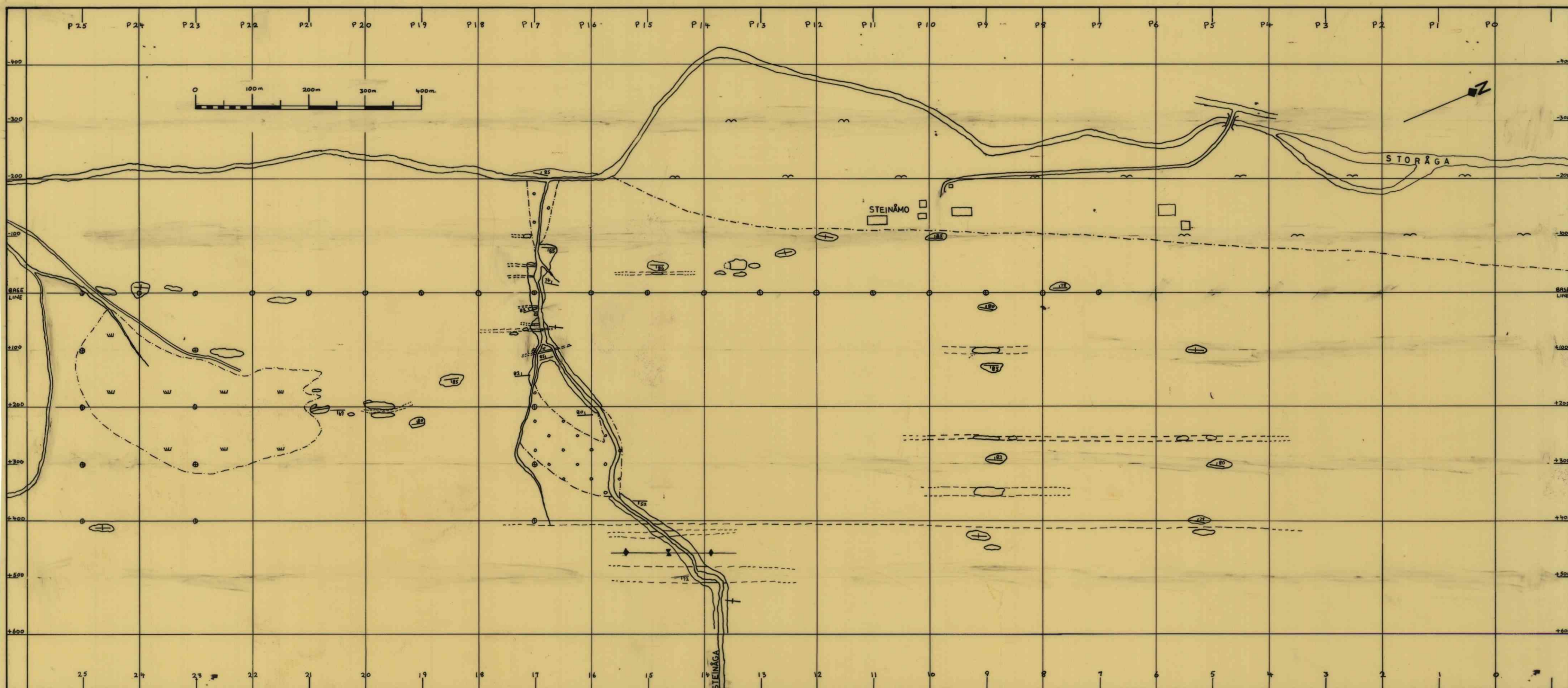
- Quartzite
- Undifferentiated Schist
- Muscovite - quartz schist
- " " " with acid pegmatites
- Muscovite - garnet (-biotite) schist
- Biotite (garnet - amphibole) schist
- Greenstone
- Mineralized greenstone
- Serpentinite
- Drift: - swamp
- " boulder fan
- " alluvial plain

<b>STEINÅGA</b> Beiardalen GEOLOGISK KART	Målestokk	Tegn. J.D.H. 29/10-75
	1:5000	Trac. J.D.H. Kfr. T.S.H. 1/11-75
Erstatning for:		
A/S SULITJELMA GRUBER Prospektering 1975 Prosjekt 7.517/B		Erstattet av:

- P 13 Profile number
- +100 Distance along profiles in metres
- o Grid point marked on the ground
- == River
- == Road
- - - - - Drift boundary
- ↖ ↗ Dip and strike of schistosity
- \* Claim
- ↔ Fold belt axis
- Geological boundary observed
- - - - - " " inferred
- - - - - " " assumed



MINERALIZED LOCALITIES 0 1m 2m 3m SCALE: 1:100



BVK 3462